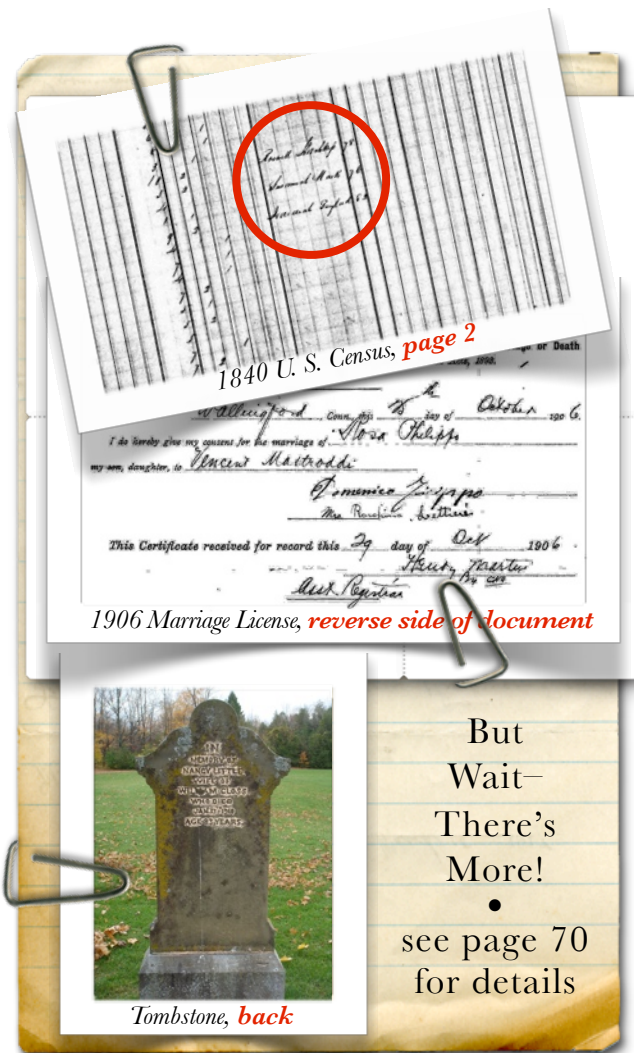


September 21 QHGS Meeting Topics: “Ancestral Religious Migratory Patterns” and “Scottish Research”



IN THIS ISSUE

QHGS Information	66
Meeting Agenda	66
Coming Next Month	66
FamilySearch Centers	66
Announcements	67
Reports	67
Webinars and Events	68
Seminars and Events	69
But Wait—There’s More!	70
DNA News	71
Meeting Place Map	72
QHGS Information	72
Newsletter Sources	72

MONTHLY MEETINGS

are held on the **third Sunday** of the month at

1:00 p.m.

at Resurrection Lutheran Church Parish Hall, 1900 East Carson St., in Long Beach, California. (map on page 72)

LEVELS OF

MEMBERSHIP

Individual: \$25.00

Family: \$37.50

Sustaining: \$50.00

Patron: \$100.00 +

Life (Individual): \$600.00

Life (Family): \$900.00

Please make check payable to QHGS.

Thank you!

QHGS

is a member of the California State Genealogical Alliance.



QHGS

is an IRS recognized 501(c)(3) nonprofit corporation.

Donations are tax-deductible.

Scottish Research and Religious Migratory Patterns

MEETING AGENDA

SEPTEMBER 21, 2014

Starting at 1:00 p.m., Judith Brooks will teach us about various religious migratory patterns and how to use them to determine the likely locations of our ancestors' church records. After the break



she will show us how to find our Scottish ancestors. Judy has been researching since 1995. She specializes in Scots and Scots Irish genealogy and has done extensive research in Virginia, Pennsylvania, Ohio, Illinois, Kentucky, and Nebraska. She is a member of the Association of Professional Genealogists, and the National Genealogical Society. Judy has begun giving classes to local genealogical societies on the Scots and Scots Irish. Her philosophy is that there is more to our ancestry than just historical dates and places. Information about the life and times of our ancestors brings full meaning to our heritage.

NEXT MONTH'S PROGRAM

OCTOBER 19, 2014

Yvette Porter-Moore, a specialist in California **adoption** searches, will speak at our October meeting. To find out more about Yvette go to her website at <http://yvetteporter-moore.com/>.

FAMILYSEARCH CENTERS

FAMILY HISTORY FAIR

A Family History Fair will be held **September 20**, from 10 a.m. to 1:00 p.m. at the Cerritos LDS Church, 17909 Bloomfield Ave, Cerritos. **Admission is free.** More information is in the flyer attached to this newsletter.

LOCAL BRANCHES

FSC stands for FamilySearch Center of the Church of Jesus Christ of Latter-Day Saints. FSCs are open and free of charge to members of the general public interested in doing genealogical research. Information about the **Los Angeles FSC** is available at https://familysearch.org/learn/wiki/en/Los_Angeles_FamilySearch_Library. Local FSCs are in **Long Beach** at 3701 Elm Avenue in Bixby Knolls, phone (562) 988-0509; **Los Alamitos**, phone (714) 821-6914; and **Cerritos**, phone (562) 924-3676. Call the local centers before you visit, as their hours may change from time to time.

Questing Heirs Genealogical Society Announcements and Reports

PRESIDENT'S MESSAGE

NEW BOARD MEMBER

Our First Vice President, Jasmine Whiteside, has resigned, so the QHGS Board has a new member. At the August 17 board meeting, I appointed Penny Nugent 1st Vice President in charge of Programs. Penny will serve out Jasmine's term until December of 2015. **Susan Roberge** was appointed Secretary, and she will serve out Penny's term until December of 2015. We give a **BIG** thank you to Jasmine for her wonderful programs, and we welcome Susan to the Board.

—Terry Hamilton

RENEW YOUR MEMBERSHIP

DUES ARE DUE

It's that time of year, QHGS Members—time to renew your memberships for another year of genealogy adventures, newsletters, speakers, fellowship, field trips, sharing, seminars, learning and fun. **Early Birds** who have already renewed their memberships are listed below:

Marilyn Brasher	Bridget Dole
MaryEmma Hargrave	Penny Nugent
Frances Liebzeit	Kathy Latham
Terry Hamilton	Laurie Angel
Shirley Siems Terry	Linda Artuso
Lois M. Tomek	

New Members who joined in August:
Darlene Fields-Harris
Denise Hofmann
Margie George

DUES CATEGORIES CORRECTION

FOUR DUES CATEGORIES

The QHGS Newsletter for August 2014 **incorrectly stated** that “there will no longer be an Individual Life membership or a Family Life membership category.” The editor regrets this error; and a correction follows:



The QHGS Bylaws as amended on 17 June 2012 provide for **four categories of membership**: Individual, Family, Life, and Family Life; and, they set the membership fees for each category relative to the individual annual dues voted by the membership. At the 20 July 2014 meeting, the members voted to set individual dues at \$25.00. Therefore, annual dues for these categories are: **Individual** \$25.00; **Family** \$37.50; **Life** \$600.00; and **Family Life** \$900.00. As always, we appreciate your generosity if you are able to contribute at the Sustaining (\$50) or Patron (\$100 +) level.

FINANCE REPORT

Chris Elia

July Income: \$186.25
July Expenses: \$330.40
F & M Bank
Balance:
\$ 5,796.87

REFRESHMENT REPORT

Sandy Hollandsworth

Our September Hosts
will be

Terry HAMILTON,
Robert NEGRETE
and
Shirley
Siems TERRY.

Many thanks to our
August Hosts,
Robert COLLINS,
Connie WILLIAMS
and
Kathy LATHAM.

MEMBERSHIP REPORT

Kathy Latham

Members attending
the August meeting: 25

Welcome To Our July Guests:

Robert Negrete,
Rosemary Rizzo,
Liz Rasmussen,
Caroll Ohlinder,
Esther Friedman,
Rolf Janssen,
Norma Lemus,
and
S. Nakano.

Internet News and Two Living History Events

LEARN ONLINE WITH WEBINARS

Illinois State Genealogical Society:

“Land Records in Illinois,” presented by Luana Darby, MLIS, on Tuesday, **September 9, at 6:00 p.m. PDT**. If you research in Illinois, you don’t want to miss the resources held in the seven regional archive repositories of IRAD. Register at: <https://attendee.gotowebinar.com/register/1778023905401548033>.

Legacy Family Tree:

Go to <http://www.familytreewebinars.com/upcoming-webinars.php> to learn more about the following **webinars which will be presented between September 3 and September 24**: “Jewish Ancestors,” “Manuscript Sources,” “Evaluating Evidence,” and “The Internet Archive.”

Southern California Genealogical Society:

Go to <http://www.scsgenealogy.com/webinar/jes-index.html> to learn more about the following **webinars which will be presented on September 6 and 17**: “She Came from Nowhere,” by Dr. Michael D. Lacopo, and “Cemetery Research,” by Jean Wilcox Hibben, PhD, CG.

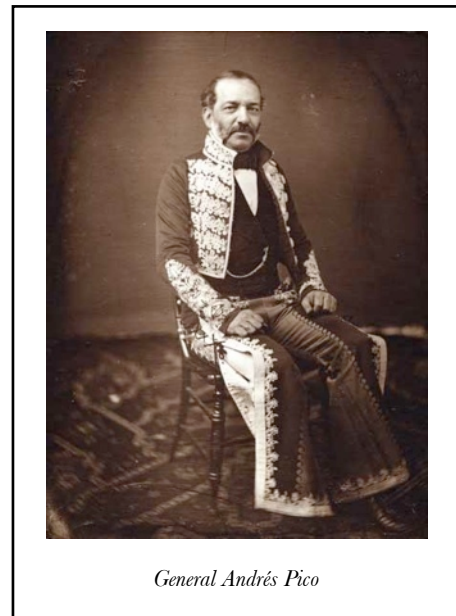
Wisconsin State Genealogical Society:

“Norwegian Genealogy: A Ten Step Program to Get You Started and Addicted,” presented by Jerry Paulson on Tuesday, **September 16, at 5:00 p.m. PDT**. Register: <http://tinyurl.com/kztpyvo> ID:106-999-027.

JEWS IN THE OLD WEST

Los Angeles Jewish Genealogical Society:

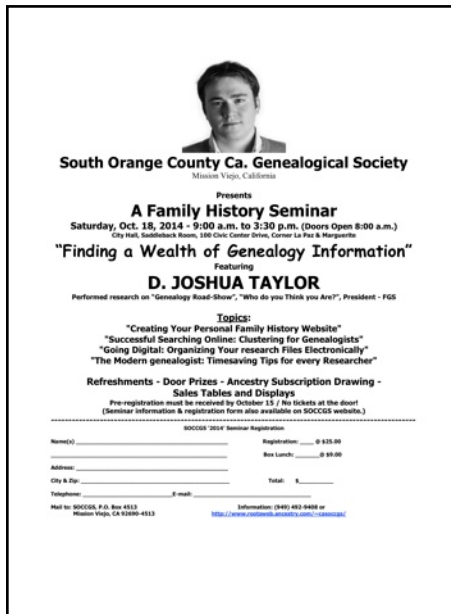
Monday, **September 22, at 7:30 p.m.**, at the Toyota USA Automobile Museum (South Bay), 19600 Van Ness Ave., Torrance. Hear “first-hand” from Solomon Star, the 1885 Mayor of Deadwood, how Jewish pioneers struggled to shape and succeed in the American West. This entertaining lecture by Lew Holzman covers the stories of many of the prominent pioneer Jewish figures through 1900 including Josie Earp (Wyatt Earp’s Jewish wife), Adah Menkin, and Charles Strauss.



HISPANICS IN THE CIVIL WAR

On Saturday, **September 20**, from **11:00 a.m. to 4:00 p.m.**, at 1052 N. Banning Blvd., Wilmington, the **Drum Barracks** will recognize the enlistment of four companies of men in the Native California Cavalry in 1864 as it holds the **fourth Sesquicentennial event** featuring an open house and new exhibition. **Admission is free.** The 1st Battalion of Native Cavalry, California Volunteers, was a cavalry battalion in the Union Army during the American Civil War. Recruits were largely drawn from the California population though its ranks included Yaqui and Mission Indians as well as immigrants from Mexico, Latin America and Europe. In addition to its ethnic makeup, the Battalion is also considered unusual for being one of the few lancer units in the United States Army. Learn more at http://en.wikipedia.org/wiki/1st_Battalion_of_Native_Cavalry_California_Volunteers. Then check out the California State Military Department website <http://www.militarymuseum.org/1stNatCavCV.html>. For information about which California counties sent volunteers, see [https://familysearch.org/learn/wiki/en/1st_Battalion_California_Native_Cavalry_\(Union\)](https://familysearch.org/learn/wiki/en/1st_Battalion_California_Native_Cavalry_(Union)).

Genealogy Events in Southern California



SOCCGS SEMINAR

South Orange County California Genealogical Society will present a **Family History Seminar** on Saturday, **October 18, from 9:00 a.m. to 3:30 p.m.** at the City Hall's Saddleback Room, 100 Civic Center Drive, Corner La Paz and Marguerite, in Mission Viejo. The **featured presenter** will be **D. Joshua Taylor**, president of the Federation of Genealogical Societies, and contributor to "Genealogy Road Show" and "Who Do You Think You Are?" Joshua will present four lectures. **Seminar registration is \$25. Pre-registration must be received by October 15. There will be no tickets at the door!** For more information visit the SOCCGS website at <http://www.rootsweb.ancestry.com/~casocccgs/>.

SDGS SEMINAR

San Diego Genealogical Society will present **Cyndi Ingle**, owner and webmaster of **Cyndi's List**, on Saturday, **September 27**. Cyndi will present four lectures, and **seating is limited to the first 200 registrants**. For more information, call (949) 429-9408 or go to <http://www.casdgs.org/>.

LOCAL AREA GENEALOGY SOCIETIES

Orange County California Genealogical Society:
"Shoot 'Picture Perfect' with Your Cell Phone" and "Getting Started with Evernote" by Tom Underhill, Saturday, **September 6**, 10:00 a.m. at the Huntington Beach Central Library, 7111 Talbert Avenue, Huntington Beach.

Corona Genealogical Society:
"The War of 1812," presented by Linda Serna, Monday, **September 8**, 6:30 to 8:30 p.m. at the Corona Public Library, 650 South Main Street (at 6th), Corona.

Los Angeles Westside Genealogical Society:
"FamilySearch-Family Tree," by Richard McBride, Director of the Los Angeles FamilySearch Library, Tuesday, **September 16**, 7:00 p.m. at the Los Angeles FamilySearch Library, 10741 Santa Monica Blvd., Los Angeles.

South Bay Cities Genealogical Society:
"Saving Records After You Scan" by Laurie Pelyao, Wednesday, **September 17**, 7:00 p.m. in the Meeting Room of the Torrance Civic Center Library, 301 Torrance Blvd., Torrance.

Genealogical Society of North Orange County:
"Caring for Keepsakes" by Denise Levenick, Wednesday, **September 17**, 7:00 p.m. at Yorba Linda Community Center, 4501 Casa Loma Ave. at Imperial, Yorba Linda.

South Orange County Genealogical Society:
"FamilySearch WIKI," by Jamie Mayhew, Saturday, **September 20**, 10:00 a.m. to noon at the LDS Church Building at 27978 Marguerite Parkway (Between Medical Center Drive and Hillcrest Drive), Mission Viejo.

Whittier Area Genealogical Society:
"Tips for Brick Wall Busting" and "The Genealogical Proof Standard," by Eric Siess, Saturday, **September 20**, beginning at 10:30 a.m., Masonic Lodge, 7604 Greenleaf Avenue, Whittier.

Genetic Genealogy News

JOHN MCCOY REPORTS:

The theme this month seems to be consternation! There are still problems on some of the popular web sites, including <https://www.familytreedna.com/> and the free <http://gedmatch.com/> web site. Improvements have been promised soon.

A more interesting oddity has been noticed by many people who have taken autosomal DNA tests, such as AncestryDNA or the Family Finder test. For reasons that are not fully understood, cases have been reported where it appears that a large block of DNA (sometimes as long as 30 cM or even more) has been inherited intact by several people, from an ancestor many generations back. If chromosomes exchanged parts according to the normal rules at each generation, such an outcome should be extremely rare. For example, several of my relatives who descend from John McDougall, born in Argyle, New York in 1810, share a piece of chromosome 13 about 20 cM in length with each other (not too improbable) AND with several people in Australia, not known to be related to each other or to any McDougall family, and whose ancestors came from the British Isles in the 1840s. Based on what is known about the settlement of Argyle, New York, the common ancestor probably lived in the middle of the 18th Century or even earlier. Are we just incredibly lucky to have encountered real but very distant relatives from such a distant (and unknown) ancestor? Or is something else going on? One possibility is that we all descend from a

common ancestor who had a piece of chromosome 13 that hardly ever exchanged parts (theoretically possible), and that this non-recombining section has indeed been passed down intact through many generations. But we don't have proof! If there really are chromosome pieces that behave like this, and we can identify them, they could be an important tool for genealogy. So many people have encountered this situation, I'm optimistic that we will eventually find some answers.

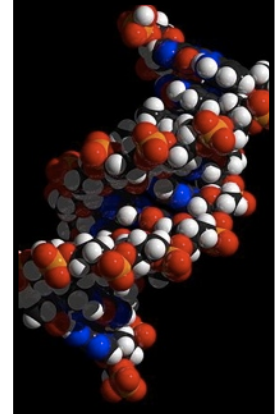
—John McCoy

HOW-TO DNA

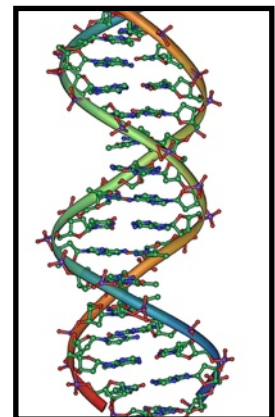
Blaine Bettinger, a genealogist and a DNA expert with a Ph.D. in biochemistry...has announced the creation of a new online how-to guide for genetic genealogy. The site will include short instructional how-to videos for beginners, as well as presentations and webcasts for the advanced genealogist. How-To DNA www.howtodna.com will also provide links to the latest videos, podcasts, and other instructional material created by DNA experts. You can learn more in Blaine's announcement at <http://www.thegeneticgenealogist.com/2014/06/20/announcing-dna>. The site is live now at <http://howtodna.com>.

The "How-To DNA" article above is from *Eastman's Online Genealogy Newsletter* dated June 20, 2014, and is copyright 2014 by Richard W. Eastman. It is re-published here with the permission of the author. More information about *Eastman's Online Genealogy Newsletter* is available at <http://blog.cogn.com/>.

THE DOUBLE HELIX



Family Tree DNA

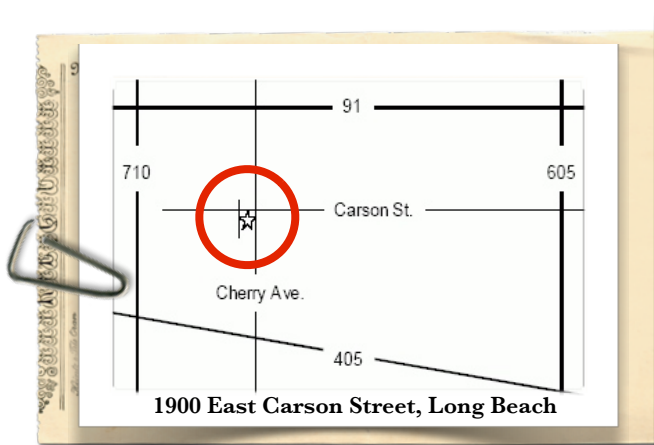


23 and Me



GEDMatch.com

Questing Heirs Genealogical Society, Inc.



Resurrection Lutheran Church Parish Hall

QUESTING HEIRS GENEALOGICAL SOCIETY DIRECTORS

- President** (1/13-12/14) Terry Hamilton (562) 596-9382 hammytl@aol.com
1st Vice President (1/14-12/15) Penny Nugent (562) 290-0416 kazootiesan@earthlink.net
2nd Vice President (1/13-12/14) Kathy Latham (562) 422-7634 kat22lat@gmail.com
Secretary (1/14-12/15) Susan Roberge (562) 598-3688 sroberge@socal.rr.com
Treasurer (1/14-12/15) Christine Elia (562) 429-8750 QuestingHeirsTreas@gmail.com
Past President Jeanette Jones (562) 430-4919 haltjones@aol.com
Director at Large/Publicity (1/13-12/14) Glenn Haas (562) 420-1060 glennhaas@att.net
Director at Large/Hospitality (1/13-12/14) Tina Yanis (562) 591-7197 tina.yanis@yahoo.com
Director at Large (1/14-12/15) Position Vacant

QHGS COMMITTEE CHAIRS

- Finance** Christine Elia (562) 429-8750 QuestingHeirsTreas@gmail.com
Hospitality Tina Yanis (562) 591-7197 tina.yanis@yahoo.com
Membership Kathy Latham (562) 422-7645 kat22lat@gmail.com
Nominating Jeanette Jones (562) 430-4919 haltjones@aol.com
Programs Penny Nugent (562) 290-0416 kazootiesan@earthlink.net
Publicity Glenn Haas (562) 420-1060 glennhaas@att.net
Social Media Jasmine Whiteside (661) 993-9186 jasmine.christine29@gmail.com

QHGS VOLUNTEER POSITIONS

- Digital Archivist** Penny Nugent (562) 290-0416 kazootiesan@earthlink.net
Research/Historian Tina Yanis (562) 591-7197 tina.yanis@yahoo.com
Newsletter Editor Penny Nugent (562) 290-0416 kazootiesan@earthlink.net
Parliamentarian Jeanette Jones (562) 430-4919 haltjones@aol.com
Refreshments Sandy Hollandsworth (562) 494-3071 shollandsworth@hotmail.com
Webmaster Mike Powers (562) 888-0212 lunalake@pobox.com

SUBMISSIONS FOR THE OCTOBER NEWSLETTER MUST BE RECEIVED BY SEPTEMBER 26TH

The newsletter has been published since 1969 by Questing Heirs Genealogical Society. Submissions, including queries, corrections, or any questions regarding the newsletter, should be sent to: Penny Nugent, QHGS P. O. Box 15102, Long Beach, CA, 90815-0102, or emailed to kazootiesan@earthlink.net. We are not responsible for the accuracy of material published, but will gladly print corrections. Newsletter sources: page 65, tombstone photo by Deborah Loughren, marriage certificate courtesy of Penny Nugent; page 66 photo of Kilmory Church of Scotland by Peter Amsden; page 70, Robert C. Payne's note courtesy of Margie George; all other illustrations are from http://commons.wikimedia.org/wiki/Main_Page and are in the public domain.

Copyright ©2014
Questing Heirs
Genealogical Society, Inc.

Permission to reprint
original items from
this publication is granted,
provided that
the reprint is used for
non-commercial,
educational purposes,
and that the following notice
appears
at the end of the article:
"Previously published in
Questing Heirs Genealogical
Society Newsletter,
Vol. 47, No. 9,
September 2014."
This newsletter is
published monthly
as a benefit for members
of Questing Heirs; it is not
meant to be sold.

In order to receive the
monthly newsletter,
one must be enrolled as
a member of the
Society.
To join, please contact
Membership Chair
Kathy Latham at
(562) 422-7645.

Family History Fair

Sponsored by Cerritos LDS Stake

"NOT YOUR GRANDMOTHER'S FAIR"

Date: Saturday, September 20, 2014

Time: 10 am to 1:00 pm

Location: Cerritos LDS Church
17909 Bloomfield Ave, Cerritos

The building is located next door to the Cerritos library.

Parking is in the rear of the church building.

My Family Tree



There will be three blocks:

Block 1 : Key Note speaker - Max Evans
Author, Director, Archivist

Block 2 : Choose any one of the following:

- Family Search/Family Tree for beginners - Marilyn Fronk, Cerritos Family History Center Director
- Indexing - Not that hard. Really! - Narice Altier, Stake Indexing Director (If you have a laptop, please bring it.)
- FamilySearch and Beyond: New resources and the Power of Partners - Roots Tech® Presentation
- Top Ten Things I learned from my Couch - Roots Tech® Presentation

Block 3 : Choose any one of the following:

- Family Search/Family Tree for beginners - Marilyn Fronk, Cerritos Family History Center Director
- Indexing - Not that hard. Really! - Narice Altier, Stake Indexing Director (If you have a laptop, please bring it.)
- FamilySearch/Family Tree: What's New and What's Next - Roots Tech® Presentation
- Getting the Most Out of Ancestry - Roots Tech® Presentation

The first 50 people to arrive and sign-in at the fair will receive a free Roots Tech® tote bag, designed to carry a laptop, note books, binders, business cards, pencils, flash drives, etc.

No charge for the fair.

Walk-in's are Welcome, but to help us arrange seating please sign up:

- Email cerritosfair@hotmail.com and include your name and which classes you wish to attend for blocks 2 and 3, or
- Call 562-865-2926. If no one answers, leave a message with your name and the classes for blocks 2 and 3.

QUESTING HEIRS GENEALOGICAL SOCIETY
COMING IN OCTOBER

QUESTING HEIRS GENEALOGICAL SOCIETY
PRESENTS:

Sunday October 19th at 1:00 P.M.

YVETTE PORTER-MOORE
“GENEALOGY AND ADOPTION”



“I sustain myself with the love of family.”
—Maya Angelou

Join Us at Resurrection Lutheran Church Parish Hall
1900 East Carson Street • Long Beach • California

Our meetings are free and open to the public.
We'd love to have you attend and become a member.

QHGS website: www.qhgs.info

QUESTING HEIRS GENEALOGICAL SOCIETY
PLEASE RENEW YOUR MEMBERSHIP
ON SEPTEMBER 1

**MAIL THIS RENEWAL FORM WITH YOUR CHECK TO:
QHGS P.O. BOX 15102 LONG BEACH CA 90815-0102**

Name _____

Spouse's Name _____

Address _____

City _____

State _____ Zip+4 _____

Phone () _____

E-Mail Address _____

Check one: **Individual (\$25)** _____ **Family (\$37.50)** _____ **Sustaining (\$50)** _____

Patron (\$100+) _____ **Life (individual) (\$600)** _____ **Life (family) (\$900)** _____

We invite you to do something extra for your society by choosing one of the special levels of membership.

The QHGS membership year runs from September 1st through August 31st.
Please notify the Membership Chair, Kathy Latham, at kat22lat@gmail.com or (562) 422-7645,
if you change your mailing address, your telephone number or your e-mail address. Thank you.

**Please take a few minutes to update your surname research and
location preferences so our Program Chairman can engage
speakers who will interest you in 2015.**

Surnames you are researching: _____

Areas of your research (countries/states/counties): _____
