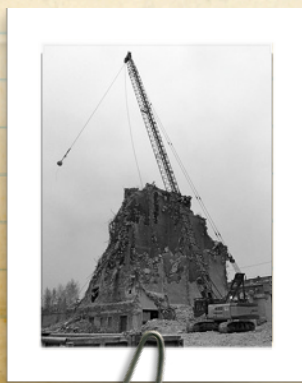


“Through Their Eyes: Finding Hidden Ancestors”
Will Be Alice Colby Volkert’s Topic
at QHGS May 18th Meeting

IN THIS ISSUE

QHGS Information 34
Meeting Agenda 34
Useful Websites 34
Announcements 35
Reports 35
Events and Internet News . . . 36
45th Anniversary Photos 37
Demolish Your Brick Walls . . . 38
Emigrant Guides 39
Meeting Place Map 40
QHGS Board Members 40
FamilySearch Centers 40
Newsletter Sources 40



Demolish
Your
Brick
Walls

•
see page 38
for details

MONTHLY MEETINGS

are held on the **third Sunday** of the month at **1:00 p.m.** at Resurrection Lutheran Church Parish Hall, 1900 East Carson Street, in Long Beach, California. (map on page 40)

ANNUAL MEMBERSHIP

New and Renewing members: \$20.00
Family: \$30.00
Sustaining members: \$50.00

Please make check payable to QHGS.
Thank you!

QHGS is a member of the California State Genealogical Alliance.



QHGS is an IRS recognized 501(c)(3) nonprofit organization.

Donations are tax-deductible.

Member Sharing Session Alice Colby Volkert

MEETING AGENDA

MAY 18, 2014

Starting at 1:00 p.m., we will spend an hour sharing our genealogical triumphs; so, be ready to tell everyone your stories of success. If you are facing a brick wall, don't hesitate to let fellow members know that, too. Someone attending the meeting may be able to suggest a new way of approaching your problem.



After our break, **Alice Colby Volkert** will be the speaker for our featured presentation, **"Through Their Eyes."** After using all the tried-and-true research strategies known, there are still some individuals that just cannot be found! Often, when we research a single ancestor, we keep narrowing our field of vision until we have little hope of "seeing" anything new; but if we stop and think about it, no longer trying to use our own eyes, and turn around to use the eyes of the person we are investigating, we may "see" the solution. What did your mystery person see? Alice Colby Volkert is a professional genealogist who understands the desires people have to learn about their ancestors, and she is delighted to help them meet those needs.

USEFUL WEBSITES

MEMBERS RECOMMEND:

Ancestry Insider

This is the unofficial, unauthorized view of Ancestry.com and FamilySearch.org. The Ancestry Insider reports on, defends, and constructively criticizes these two websites and associated topics. The author attempts to fairly and evenly support both. The Ancestry Insider blog is a readers' choice news and resources blog, honored as part of Family Tree Magazine's "40 Best Genealogy Blogs." It was named a "25 Most Popular Genealogy Blogs" by ProGenealogists, and Family Tree Magazine's "101 Best Web Sites" award. The Ancestry Insider is a genealogical technologist. He has been an insider at both Ancestry.com and FamilySearch. He has a post-graduate technology degree and holds a dozen technology patents in the United States and abroad. He has done genealogy since 1972 and has worked in the computer industry since 1978. Web Page: <http://www.ancestryinsider.org/>—Thanks to Glenn Haas for calling this website to our attention.

Poznan Project

This site has marriage indexes for the 19th century within the former Prussian province of Posen, now Poznan, Poland, and neighboring districts. The database at <http://poznan-project.psnc.pl/> presently contains 1,083,632 marriages which are cross-referenced to FHL microfilm numbers. If you have ancestors from the Posen/Posnan area of Poland and don't know which village they came from, this website will help you find them.

Questing Heirs Genealogical Society Announcements and Reports

PRESIDENT'S MESSAGE

PERSISTENCE PAYS OFF

John McCoy's talk at the April meeting showed us all that persistence really does pay off, that the truth will out, and that we need to use every resource possible to find the answers we seek. May's meeting will be **your** opportunity to show us what answers you've found (or haven't found) during the past year, as well as an opportunity to hear about using different perspectives in your research. We have a **fundraiser coming up on May 6 at Papalucci's restaurant**. Please distribute the reminder flyers you received at the April meeting to all your friends, and encourage them to "eat Italian" on the 6th of May. See you at the meeting on May 18.

—Terry Hamilton

WELCOME

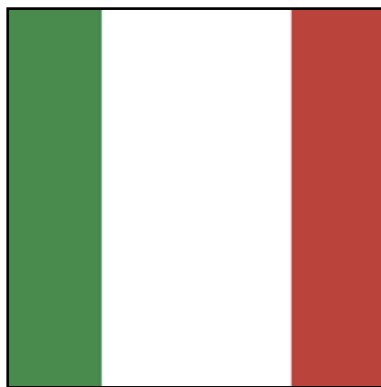
TO OUR NEW MEMBERS

Deborah Baughman is researching surnames: Baughman, Naas, Mucher, Andrews, Meek, Cooper, Hepburn, McLean, Malone, Rembold, McCreary, Anderson, Wood and Curry. **Jon Stroosma** is researching surnames: Adams, Brown, Francis, Bartlett, Stroosma and Stroo in the U.S. and the Netherlands. **Shirley Siems Terry** is researching surnames: Siems, Goebner, Vienop, Damkroger, Schlake, Scherniken, Emal, Day, Cobb, House, Benge, Terry, Dinnel, Hammon(d)s and Harville in the U.S. and in Germany.

FUNDRAISER AT PAPALUCCI'S

MAY 6

Eat a delicious Italian dinner and help raise money for QHGS at the same time! **Tuesday, May 6** is "QHGS Day" at Papalucci's in Belmont Shore. The restaurant's owner has agreed to donate 20% of his receipts for the day to



our organization; so, bring your appetite and all of your friends to Papalucci's, 4611 E. 2nd Street in the Belmont Shore area of Long Beach on May 6. Parking is available behind the restaurant.

ATTENTION

ALL BEGINNERS

Our Beginners Class is back! If you are new to genealogy, be sure to attend. The class starts a few minutes after our main meeting ends and lasts about an hour. Get the help you need as Cynthia Day-Elliott teaches you basic steps to genealogical success. QHGS began with people who met to help one another. Carry on this tradition at the Beginners Class.

FINANCE REPORT

Chris Elia

March
Income: \$17.06
March
Expenses: \$320.79
F & M Bank
Balance:
\$5931.48

REFRESHMENT REPORT

Sandra
Hollandsworth

**Our
May Hosts
will be
George and Polly
Johnson,
Kathy Latham,
and
Susan Roberge.**

Many thanks
to our April hosts:
Kathy and Larry
Akau,
Maxine Pitts,
and
Connie Williams.

MEMBERSHIP REPORT

Kathy Latham

Members
attending
April's meeting: 34
Guests: 3

Our Guests:
Darlene Fields,
Mary Poissant,
and Sue Tisdall

Internet News and Genealogy Events

QHGS FIELD TRIP TO LAPL

Questing Heirs Genealogical Society members will gather **Saturday morning, May 10**, at the Blue Line station on Wardlow Road at Pacific Avenue for a fun-and-research-filled field trip to the **Los Angeles Public Library**. Cynthia Day-Elliott will be our guide, and when we arrive at the library we will be given a docent-led tour of its genealogy department. Prepare yourself for this trip by visiting the LAPL website at <http://www.lapl.org/branches/central-library/departments/history-genealogy> and downloading research guides available at the bottom of the page. For more information re: departure time, please call Cynthia Day-Elliott at 562-427-9663.

LOCAL AREA GENEALOGY SOCIETIES

Orange County California Genealogical Society: “Searching the Censuses of the City of New York” will be presented by Joel Weintraub, Saturday, **May 3, 11:00 a.m.**, at the Huntington Beach Central Library, 7111 Talbert Avenue, Huntington Beach.

Corona Genealogical Society: “Local History Is . . . Your History (Using Local County and City Histories)” will be presented by Barb Randall, Monday, **May 5, 7:00 p.m.**, at the Corona Public Library Community Room, 650 S. Main St. at 6th, Corona.

South Orange County Genealogical Society: “Cloud Computing” will be presented by Randy Seaver, Saturday, **May 17, 10:00 a.m.**, at the LDS Church Building at 27978 Marguerite Parkway (Between Medical Center Drive and Hillcrest), Mission Viejo.

Polish Genealogical Society of California: “Genealogy as Detective Work,” and “Family Stories: Genealogy Beyond Just the Dates” will be presented by Linda Serna, Saturday, **May 24, 1:00 p.m.**, at the Los Angeles FamilySearch Library, 10741 Santa Monica Blvd, Los Angeles.

RANCHO LOS CERRITOS

2014 Lecture Series: “California—A Land of Many” “Building Railroads and Transplanting Chinese Food: Chinese Americans in the 19th Century” will be presented by Dr. Yong Chen on Saturday, **May 10, 10:00 a.m.** at Rancho Los Cerritos Historic Site, 4600 N. Virginia Road, Long Beach. Dr. Chen has authored numerous books about Chinese American food, culture, history, and Sino-American relationships. Lecture cost is \$7. Call 562-570-1755 now to reserve your seat at this talk.

SAVE \$100 ON ANCESTRY

Lots of people are talking about the **AARP offer** that **saves 30 percent (\$100) off the cost of a one-year Ancestry World Explorer Membership**. The offer is good through March 2015. [Here's a link to the offer](#). The small print on the offer reads: “Offer good for valid AARP Members who wish to subscribe to the Ancestry.com® World Explorer membership for a one-year subscription. New Ancestry.com® members can visit <http://www.ancestry.com/aarp> and choose between the Ancestry.com® World Explorer subscription in either monthly or semi-annual durations. Your subscription will automatically renew after the initial duration (monthly or semi-annually) at the discounted rate for the entire first year. Thereafter, your subscription will automatically renew at standard list prices. Existing Ancestry.com® members must call Member Services at 1-800-514-4645 to access the discount. For existing Ancestry.com® members, the available discounted package may vary depending on one’s existing membership. Limit one discount per valid AARP Member number; may not be transferred or postponed. AARP members with a current Ancestry subscription should call the number above to take advantage of the discount.” According to conversations on Facebook, some people are being told to call back 1-3 months before their subscription expires; and the discount will be applied then.

—*Thanks to Chris Elia for calling our attention to this offer.*

QHGS 45th Anniversary Celebration Photos



Photo by Gary Reid

What a fine-looking group! Can you find yourself in this picture?



Photo by Kathy Latham

Chuck Horton, Jeanette Jones, John McCoy, Terry Hamilton, and Liz Stookesberry-Myers

Our QHGS Past Presidents 1995 to 2012 with Current President Terry Hamilton

Demolish Your Brick Walls

Families often disappear between one census and the next; records are lost or destroyed through mishandling, fire, war and flood; and sometimes the facts you do find just don't make sense. When your family history research hits a dead-end, organize your facts and try one of these popular brick wall busting tactics:

Review What You Already Have

It seems basic, but I can't stress enough how many brick walls are breached with information that the researcher already had tucked away in files, boxes or computer disks. Information that you found a few years ago may include names, dates or other details that now provide clues given new facts that you've since uncovered. Organizing your files and reviewing your facts may uncover just the clue you're looking for.

Go Back to the Original Source

Many of us are guilty of only including the facts we deem important at the time when we transcribe information or record notes. You may have kept the names and dates from that old census record, but did you also keep track of other information such as years of marriage and country of parent's origin? Or, perhaps, did you misread a name or misinterpreted a relationship? Be sure to go back to the original records, making complete copies and transcriptions and recording all clues however unimportant they may seem right now.

Broaden Your Search

When you're stuck on a particular ancestor, extend your search to family members and neighbors. When you can't find a birth record for your ancestor that lists his/her parents, maybe you can locate one for a sibling. When you've lost a family between census years, try looking for their neighbors. You may be able to identify a migration pattern or a mis-indexed census entry that way. Often referred to as "cluster genealogy," this research process can often get you past tough brick walls.

Question and Verify

Many brick walls are built from incorrect data. In other words, your sources may be leading you in the wrong direction through their inaccuracy. Published sources often contain transcription errors, and even

original documents may contain misinformation, whether purposefully or accidentally given. Try to find at least three records to verify any facts that you already know, and judge the quality of your data based on the [weight of the evidence](#).

Check Name Variations

Your brick wall may be something as simple as looking for the wrong name. Variations of last names can make research complicated; so be sure to check all spelling options. Soundex is a first step, but you can't count on it entirely. Some name variations can actually result in different [soundex codes](#). Not only can the surnames be different, but the given name may be different as well. Records may be recorded under initials, middle names, nicknames, etc. Get creative with [name spellings and variations](#) and cover all the possibilities.

Learn Your Boundaries

Even though you know that your ancestor lived on a particular farm, you may still be looking in the wrong jurisdiction. Town, county, state and even country boundaries changed over time as populations grew or political authority changed hands. Records may also not always be registered in the same locality where your ancestors lived. In Pennsylvania, for example, births and deaths can be registered in any county. Bone up on your [historical geography](#), and you just may find a new route around your brick wall.

Ask for Help

Fresh eyes can often see beyond brick walls, so try bouncing your theories off other researchers. Post a query to a website or mailing list which focuses on the locality in which your family lived; contact members of the local historical or genealogical society; or just talk through the problem with someone else who loves family history research. Be sure to include what you already know, as well as what you'd like to know, and describe which tactics you've already tried.

—*This article, written by Kimberly Powell, was originally published at http://genealogy.about.com/od/basics/a/brick_walls.htm and titled "Brick Wall Strategies for Dead-End Family Trees."*

Emigrant Guides of the 19th Century

What if you were going to a place you had never seen—AND—there was a very high probability you would never return to the place you call home?

Peter Remaklus, my G-G Grandpa, was born, married, had 7 children and worked as a tailor in a town called Illerich, which boasted a total population of around 200 people. I have found no evidence that he ever ventured more than 7 kilometers from Illerich during his early adulthood. Then, at age 42, he packed up his wife and children and boarded a ship, the American Eagle. The family endured a 41 day trip in steerage class and landed in a country they had only read or heard about. What information did he gather that made him feel secure enough to uproot 9 people and change the life of his family and the generations to come? Presumably, people from his town or family had paved the route to America before him, but the largest source of information he likely used was an Emigrant Guide.

Emigrant Guides were targeted at people who were contemplating leaving a place or country to settle elsewhere. Today these guides are incredibly rich in helping you gain insight into your ancestors' preparations for, travel to, and settlement in their new land. The guides were aimed at people who were literate and had the means to travel and start a life in an unfamiliar land.

Emigrant guides were produced by many sources including individuals, organizations, governments and businesses. They grew in popularity during the mid-1800s when immigration became common. There were any number of reasons why people felt "pushed" to leave their current homes. Wars, natural disasters, religious persecution and a poor economy were a few common ones. Emigrant guides provided the "pull" to bring people to new places. The guides promoted climate, available land, smaller populations, schools and jobs to name just a few advantages of the emigrant's destination. They also covered very specific information to help the newly arrived family get settled. These included: the best times to emigrate, manners and customs of the new country, preparations (how to travel, what to bring

and estimated costs). the journey itself, precautions (along the way, upon arrival, and avoiding scams), finding employment, agricultural advice, health concerns, and much more!

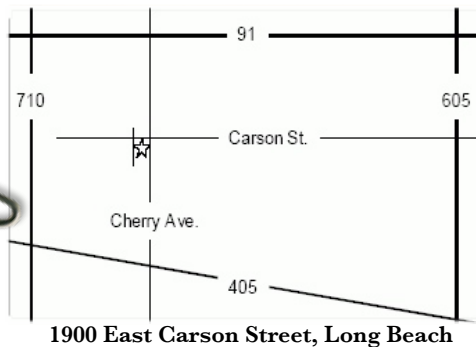
So, where do you find these treasures? Well, a few good sources are: Google Books, the Internet Archive, Family History Books at FamilySearch, Library of Congress, Open Library, and Digital Public Library of America. Go to any of these sites and enter some key words like "Emigrant," "Guide," or "Emigrant Guide Ireland" (or any other country), and you will be rewarded with some amazing information.

Emigrant Guides online:

1. Joseph Pickering's 1832 guide to the United States and Canada: http://www2.hsp.org/exhibits/Balch%20resources/emigrationusa/html/body_1_pickering.html
2. F.W. Bogen's English/German guide to the United States circa 1851: http://www2.hsp.org/exhibits/Balch%20resources/emigrationusa/html/body_1_bogen.html
3. American Social Science Association. Handbook for Immigrants to the United States. New York, New York: Hurd and Houghton; Cambridge, Massachusetts: The Riverside Press, 1871: http://www2.hsp.org/exhibits/Balch%20resources/emigrationusa/html/body_1_american_guide.html
4. Guide to Ohio, Michigan, Indiana, Illinois, Missouri, Iowa and Wisconsin: Emigrant Guide for Coming to the USA: <http://quod.lib.umich.edu/m/moa/aja3435.0001.001/1?view=image&size=75>

Even if you don't find anything that matches your ancestor's exact experience, an Emigrant Guide will allow you to step into their shoes and imagine their steps. So find yourself an Emigrant Guide and, as you read it, take time to visualize how your family felt as they read these words and contemplated the world and the new life that awaited them.

—*This article, written by Cindy Brennan, originally appeared in the Sonoma County Genealogical Society SCGS NEWS, September 2013 Volume 23 Issue 7.*



Resurrection Lutheran Church Parish Hall

QUESTING HEIRS GENEALOGICAL SOCIETY MEETING PLACE

QHGS BOARD MEMBERS

President	Terry Hamilton	(562) 596-9382	hammytl@aol.com
1st V-President	Jasmine Whiteside	(661) 993-9186	jasmine.christine29@gmail.com
2nd V-President	Kathy Latham	(562) 422-7645	kat22lat@gmail.com
Secretary	Penny Nugent	(562) 290-0416	kazootiesan@earthlink.net
Treasurer	Christine Elia	(562) 429-8750	chrise365@earthlink.net
Past President	Jeanette Jones	(562) 430-4919	haltjones@aol.com
Dir. at Large	Glenn Haas	(562) 420-1060	glennhaas@att.net
Dir. at Large	Tina Yanis	(562) 591-7197	tina.yanis@yahoo.com
Dir. at Large	Linda Ryan	(562) 422-4006	llcuttenryan1@verizon.net
Webmaster	Mike Powers	(562) 888-0212	lunalake@pobox.com

FAMILYSEARCH CENTERS

FSC stands for FamilySearch Center of the Church of Jesus Christ of Latter-Day Saints. FSCs are open and free of charge to members of the general public interested in doing genealogical research. Information about the **Los Angeles** FSC is available at https://familysearch.org/learn/wiki/en/Los_Angeles_FamilySearch_Library. Local FSCs are in **Long Beach** at 3701 Elm Avenue in Bixby Knolls, phone (562) 988-0509; **Los Alamitos**, phone (714) 821-6914; and **Cerritos**, phone (562) 924-3676. Call the local centers before you visit, as their hours may change from time to time.

SUBMISSIONS FOR THE JUNE NEWSLETTER MUST BE RECEIVED BY MAY 22ND

The newsletter has been published since 1969 by Questing Heirs Genealogical Society. Submissions, including queries, corrections, or any questions regarding the newsletter, should be sent to: Penny Nugent, QHGS P. O. Box 15102, Long Beach, CA, 90815-0102, or emailed to kazootiesan@earthlink.net. We are not responsible for the accuracy of material published, but will gladly print corrections. Newsletter sources: page 33 wrecking ball photo by Stefan Kuhn; page 34 Alice Colby Volkert photo from <http://www.volkertservices.com/>; page 35 LAPL photo © 2009 by Matthew Field; page 37 photographs by Gary Reid and Kathy Latham; all other illustrations are from http://commons.wikimedia.org/wiki/Main_Page and are in the public domain.

Copyright ©2014
Questing Heirs
Genealogical Society, Inc.

Permission to reprint
original items from
this publication is granted,
provided that
the reprint is used for
non-commercial,
educational purposes,
and that the following
notice appears at the end of
the article: "Previously
published in Questing Heirs
Genealogical Society
Newsletter,
Vol. 47, No. 5,
May 2014."

This newsletter is
published monthly
as a benefit for members
of Questing Heirs; it is
not meant to be sold.

In order to receive
the monthly
newsletter, one must
be enrolled as a
member of the
Society.
To join, please
contact
Membership Chair
Kathy Latham at
(562) 422-7645.