

QUESTING HEIRS GENEALOGICAL SOCIETY
LONG BEACH, CALIFORNIA

• **Our February Presentation •**
Hal Horrocks

‘Organizing Your Genealogy’ and
‘Early Migration Patterns to Kentucky & Beyond’

Sunday February 16, 2020 at 1:00 pm

MONTHLY MEETINGS

Our monthly meetings are held on the third Sunday of the month at 1:00 p.m. at the Lakewood Masonic Center, 5918 E. Parkcrest Street, in Long Beach California. See the map on the last page.

MEMBERSHIP LEVELS

Dues are \$30 per year for an individual or \$45 per year for a family.

Look for us on the Web:

<http://www.qhgs.info/>

or on Facebook:

[https://www.facebook.com/](https://www.facebook.com/QuestingHeirs/)

[QuestingHeirs/](https://www.facebook.com/QuestingHeirs/)

QHGS is an IRS recognized 501(c)(3) nonprofit corporation. Donations are tax-deductible.

IN THIS ISSUE

| | |
|--|----|
| QHGS Information..... | 7 |
| February Program..... | 7 |
| About Our Speaker | 8 |
| President’s Message | 8 |
| The Components of a Research Plan | 9 |
| Welcome New Members | 11 |
| Refreshment, Treasurer, & Membership Reports.. | 11 |
| Winterthur Museum | 11 |
| Cup of Coffee Question | 11 |
| Learning Opportunities..... | 12 |
| QHGS Board and Volunteers..... | 13 |
| Newsletter Sources & Meeting Map..... | 13 |

• FEBRUARY QUOTE •

‘Have patience. It’s not a race. I’ve been searching for some information over 20 years and I’m not frustrated. New records are going online or can be found in paper form every day. Tomorrow could very well bring the answer.’

-Mark Daly

• Our February Presenter – Hal Horrocks •

‘Organizing Your Genealogy’ and
‘Early Migration Patterns to Kentucky and Beyond’

Hal Horrocks is a native of Long Beach and a 46-year Orange County resident currently living in Costa Mesa. Hal Horrocks is a professional genealogist, teacher, author, and lecturer and has been doing family research for over 20 years. He is a member of several professional genealogical associations and is a past-president of the Orange County California Genealogical Society (OCCGS) headquartered at the Huntington Beach Central Library. Hal owns his own small manufacturing company located in La Habra and is a graduate of CSULB. He has been lecturing to genealogical and other societies for the last 11 years on a range of subjects that include why people get involved in genealogy to conducting research in early England.



Organizing Your Genealogy

Have you ever needed to find a file on your computer and can't find it? You don't remember where you put it. You really need it to continue or verify your genealogy research. It's not surprising because you probably have over 10,000 files in your documents section alone. Maybe it's time to get organized. Then the question is how are you going to organize them? We will explore several ways for you to organize your computer files.

Early Migration Patterns to Kentucky and Beyond

You have traced your ancestors back to Kentucky, Tennessee, Ohio, Indiana, Illinois, and Missouri in the late 1700's and early 1800's. Then you find them in Maryland, Pennsylvania, New York or Virginia before that. Have you ever asked yourself how they got to Kentucky? We will explore some of the routes they might have taken to give you a better understanding what your ancestors went through to get a better life and the trials they went through.

•QHGS President's Message •

The new year has brought new visitors to our society meetings. I hope to see you return and hopefully join our society. Thank you to those visitors who have already joined.

We thank all of you who have been members for many years. A special thanks to those members who have added an extra donation to their membership.

We started a drive to bring more folks to the exciting world of genealogy. Gathering with folks who have a combined experience level in the thousands is a personal way to learn something new.

Tell a friend about our meeting and if they attend, you get one entry into the drawing for a free Ancestry DNA test that I will donate. The drawing will be at our June meeting. The winner need not be present.

If you have any questions, concerns, ideas or suggestions, please let me know. You can find my contact information in the member directory.

Christina "Tina" McKillip

• The Components of a Research Plan •

At last month's meeting we talked about creating a timeline. Are you missing facts on your timeline? Or are you hoping to prove facts that you've found with valid sources? You might think about creating a research plan. Most books and articles you read agree that there are five components of a genealogy research plan

1. What is your objective?
2. Gather what you already know.
3. Create a hypothesis.
4. Identify the possible source records.
5. Determine your research strategy.

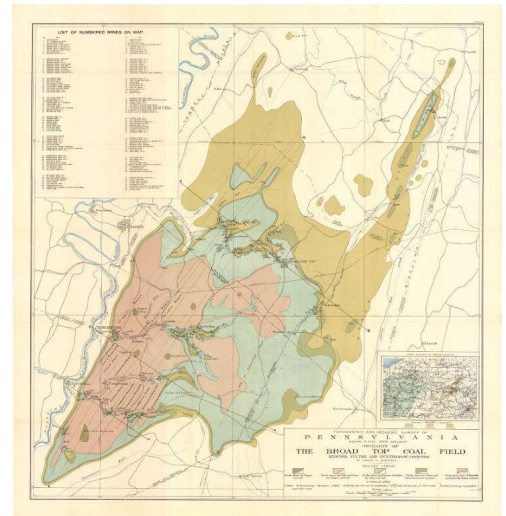
What is your objective?

What do you want to learn about your ancestor? Are you hoping to validate a marriage, spouse, maiden name, where they were in a specific year or if they married more than once? Having a plan will help you keep focused as you research.

- ✓ Is the Isabella Gettleman who married Thomas Corcoran the same person who married John Wise of Bedford County, Pennsylvania?

Gather the facts you have.

- ✓ 1850 census: Isabella Gettleman is living in Middle Woodbury, Bedford, Pennsylvania with her parents John and Margaret Gettleman.
- ✓ 1860 census: Living with parents and siblings Woodbury, Blair County, PA
- ✓ Isabella Corcoran death certificate
 - DOB 19 Jul 1848 and DOD 16 Sep 1916 in Broad Top, Bedford County, Pennsylvania.
 - Her parents are listed as John Gettleman and Margaret McGee.
 - Her husband is listed as Thomas Corcoran living in Defiance, PA.
- ✓ Isabella Wise age 'past 39 years' marriage Thomas Corcoran on 2 January 1893 in Bedford, PA. The record indicates that her parents have died and her past husband died three years earlier.
- ✓ PA Wills and Probate Records 1683-1993 County of Bedford:
 - Bell Corcoran of Broad Top with date of probate 22 September 1916
 - Executor Will Book 10, page 583.
- ✓ 1900 census In Broad Top, Bedford County, Pennsylvania
 - Isabella Corcoran (age 51) living with Husband Thomas Corcoran (recorded as Thomas Coeren)
 - Twelve-year-old nephew William Bard living in household.
 - Married 7 years (1883). Total children born one, alive one.



*Pennsylvania Geological Survey Collection: Public Domain
courtesy of The Pennsylvania State University Libraries*

Create a hypothesis.

What do you hope to prove with your research about your ancestor? You might begin with:

- ✓ Was Isabella first was married to John Wise?
- ✓ Three years after John's death, did Isabella marry Thomas Corcoran?

Identify the possible source records.

What records are available to prove your hypothesis? Review the types of records collected during that period of time for that location. Are the records digitized or indexed? Are they online? Here are a few sources for marriages or notices:

- ✓ Historical Society of Pennsylvania, Marriages
- ✓ United States Marriages – Pennsylvania, 1626-2016
- ✓ Pennsylvania Civil Marriages, 1677-1950
- ✓ Pennsylvania, Marriage Records, 1700-1821
- ✓ Pennsylvania, Marriages, 1709-1940
- ✓ Pennsylvania, County Marriages, 1845-1963
- ✓ Pennsylvania, County Marriages, 1885-1950
- ✓ Genealogical Society of Pennsylvania, Marriage Indexes and Licenses
- ✓ Bedford County Historical Society
- ✓ Pennsylvania Newspaper Archive
- ✓ LOC, Chronicling America, The Bedford Gazette
- ✓ Newspapers.com
- ✓ Genealogybank.com

Determine your research strategy.

What is the best way to start looking at records? Should you look at records that are easiest for you to access – perhaps online records. Visiting out of town archives or libraries, or hiring a local genealogist to pull records might be your second step. Could you can ask a local genealogical society to look up records for a fee or donation?

Are there any obituary notices in newspapers for John Wise or Thomas Corcoran? They might their include spouse or children. Are there any census records that indicate years of marriage or any children? You might be able to narrow down the years of a marriage. Children's marriage or death certificates might list first and last names of parents. Are there any church records where they might have married? Are there any supporting documents attached to your ancestor on Ancestry or Findagrave? Maybe you can find another person researching this family that has proof.

It might help to lay out all your facts in a timeline. Looking at your facts and sources on a timeline also may make something you've missed pop out or see where any gaps occur.

If after following your research plan you have still not found records that prove your objective, consider redefining your plan. Review new information and sources you have found. Consider looking for records in an adjacent county or state. Take these factors into account to form your revised research plan.

• Are You New to Genealogy? •

If you are just starting out on your genealogy journey, you might want to check out these articles online. Each has some great tips for starting to research your family tree. They are a good starting point.

- ✓ 'Beginning Genealogy: How to Get Started the Right Way'
<https://www.familysearch.org/blog/en/beginning-genealogy-started/>
- ✓ 'Ten Steps to Get Started on Your Family Tree' <https://www.familytreemagazine.com/premium/10-steps-to-start/>
- ✓ 'The Ten Best Genealogy Websites for Beginners'
https://ancestralfindings.com/the-ten-best-genealogy-websites-for-beginners/?gclid=EAlalQobChMlxP7QrO6u5wIVS73ACh08KQ_MEAMYAyAAEglqD_D_BwE



REFRESHMENT REPORT by Sandy Hollandsworth
Snacks for February meeting: Sue Tisdall, and Janice Miller

TREASURER REPORT by Christine Elia
(October 2019-December 2019)
Income: \$1,230.43
Expenses: \$961.43

For the 2019 year, our Expenses exceeded our Income by \$656.02.
F&M checking balance: \$3,891.86 of which \$367.06 is restricted to educational expenses.
Our F&M savings account has been closed and all savings are now at Fidelity with a balance of \$21,234.65.

MEMBERSHIP REPORT by Cynthia Day-Elliott
At the January meeting there were 29 members and 8 visitors in attendance.

• Winterthur Museum •

The Winterthur Gardens, Library and Museum houses one of the most significant collections of Americana in the United States. It was originally the childhood home of Henry Francis du Pont (1880-1969). Winterthur was designed by H.F. and his father Henry Algernon du Point. H.F. du Pont started to amass a collection of American art and antiques. In 1951 he welcomed the public to view his collections. The museum now houses about 85,000 objects. The Winterthur Museum property is vast and their collections are plentiful. The du Pont family has a rich history at Winterthur. Take a moment this month to look at their website and others to learn more about this period of history. Read more about the family and museum at <http://www.winterthur.org/visit/about-winterthur/history-of-winterthur/>.

• Cup of Coffee Question •

Question: How many rooms are there inside the house? To find the answer to this question go to: <http://www.winterthur.org/visit/about-winterthur/>

_____ 182 _____ 135 _____ 156 _____ 175



A winning entry will be picked from the correct answers at the next QHGS meeting. Win a gift card courtesy of Janice Miller.

• Learning Opportunities •

Conferences and Events

- ✓ 40th IAJGS International Conference on Jewish Genealogy August 9-14 in San Diego. For more information see <https://s4.goeshow.com/iajgs/annual/2020/hosts.cfm>
- ✓ 7th Annual OCCGS Genealogy Bash and Book Faire with Paul Woodbury. It is Saturday March 7 at the Huntington Beach Central Library. For More information see https://occg.com/mtg_event/bash/bash.html
- ✓ Genealogical Society of North Orange County on Saturday, July 25. Save the date for their annual seminar. The speaker will be Luana Darby at the Danish Lutheran Church in Yorba Linda. For more information see <https://www.gsnocc.org/seminar.html>

Gena Philibert-Ortega's Cruises

- ✓ Great Alaska Gold: Pioneers and Family History. August 23-30, 2020: Seattle, Victoria, Ketchikan, Juneau and Skagway. Presentations at sea by Cyndi Ingle, David Allen Lambert, Daniel Horowitz, Ron Arons, Tami Osmer Mize and Gena Philibert-Ortega.
- ✓ Viva Mexico: Sun and Fun on Land, Genealogy at Sea! February 6-11, 2021: Los Angeles to Cabo San Lucas

For more information see <https://www.oconnelltravel.com/GroupRegistrations/view/85944> (for Mexico) or <https://www.oconnelltravel.com/rw/view/84648> (for Alaska) or www.GenealogyCruises.com

Legacy Family Tree Webinars

February 12, 13: 'Best Practices for Success in Facebook Groups for Genealogy' by Cyndi Ingle

February 18, 19: 'A Convincing Argument or a Convoluted Mess' by Barbara Vines Little

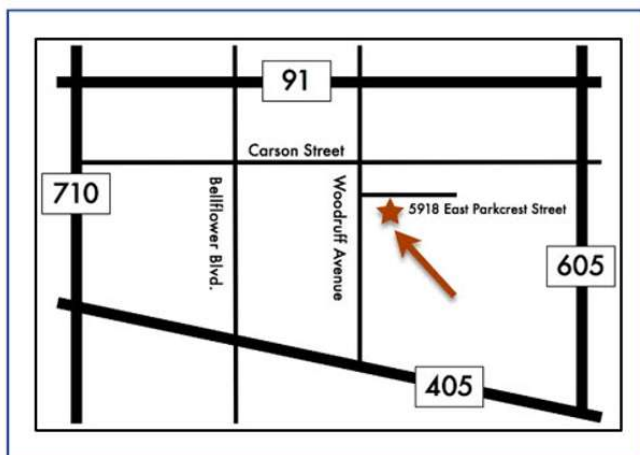
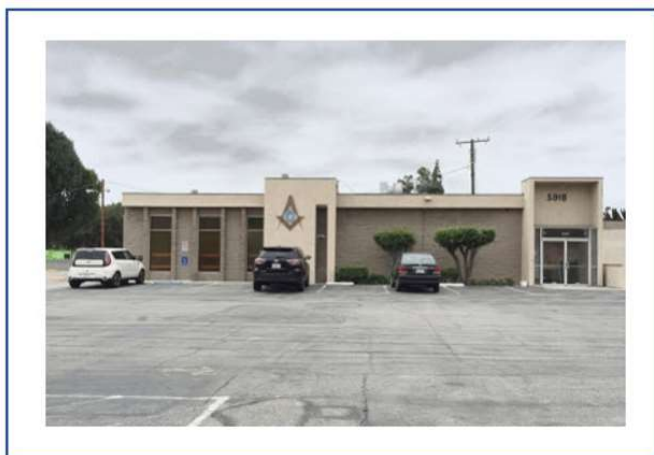
Feb 19: 'Newspapers for People of Color Genealogy Research' by Nicka Smith

Feb 26: 'Using Snagit for Genealogy Visual Storytelling and Instruction' by Collen Greene

For more information on their upcoming webinars see <https://familytreewebinars.com/upcoming-webinars.php>

Blogs and Articles to Read

- ✓ 'Best Strategies: How to Find Church Marriage Records' at <https://lialouisecooke.com/2019/12/14/how-to-find-church-marriage-records/>
- ✓ 'Bring Out Your Dead: A Look at Mortality Schedules' by Thomas MacEntee at <https://www.archives.com/experts/macentee-thomas/bring-out-your-dead-a-look-at-mortality-schedules.html>
- ✓ 'Outstanding African American Women in History' at <https://www.familysearch.org/blog/en/african-american-women-in-history/>
- ✓ 'How to Search United States World War II Military Records' at <https://www.familysearch.org/blog/en/military-records-search-ww2-us/>
- ✓ 'How to Research Around the 1890 Census Loss' at <https://lialisson.com/1890-census-genealogy-newspapers-part-6/>
- ✓ 'Family Histories Are Not Just for Members Only' at <https://www.nypl.org/blog/2018/04/26/published-family-histories>
- ✓ '50 Free Genealogy Sites to Search Today' at <https://familyhistorydaily.com/genealogy-resources/50-free-genealogy-sites/>
- ✓ 'Italian Surnames: 7 Facts to Know' at https://blogs.ancestry.com/cm/italian-surnames-7-facts-to-know/?pp=1&o_xid=101859&o_lid=101859&o_sch=External+Paid+Media



Lakewood Masonic Center • 5918 Parkcrest Street Long Beach, CA

Questing Heirs Genealogical Society Board

| | | |
|---|--------------------------|-------------|
| President..... | Christina McKillip..... | (2019-2020) |
| 1 st Vice President – Programs | Terry Hamilton..... | (2018-2020) |
| 2 nd Vice President – Membership | Cynthia Day-Elliott..... | (2019-2020) |
| Secretary | Diana Transue..... | (2020-2021) |
| Treasurer | Bob Prager..... | (2020-2021) |
| Director – Hospitality..... | Tina Yanis..... | (2019-2020) |
| Director – Newsletter..... | Janice Miller..... | (2019-2020) |
| Director– Publicity | Jerry Hardison..... | (2020-2021) |
| Past President..... | Sandy McDonald..... | (2019-2020) |

QHGS Volunteer Positions

| | |
|--|---------------------|
| Digital Archivist..... | Vacant |
| Research/Historian | Tina Yanis |
| Refreshments..... | Sandy Hollandsworth |
| Social Media/Facebook Coordinator..... | Laurie Angel |
| Webmaster | John McCoy |

Submissions for the March 2020 Newsletter
 Must be received by noon on February 22, 2020

The newsletter has been published since 1969 by Questing Heirs Genealogical Society, Inc. Submissions, including queries, corrections, or any questions regarding the newsletter should be sent to: Janice Miller, QHGS, P.O. Box 15102, Long Beach, CA 90815-0102, or emailed to questingheirs@gmail.com. We are not responsible for the accuracy of material published, but will gladly print corrections. Newsletter illustrations: QHGS logo designed by Mike Powers. Photo on page 8 courtesy of Hal Horrocks. All other illustrations are in the public domain and come from New York Public Library, Library of Congress, Wikimedia Commons, Dover Royalty Free Clip Art or as sited.

Copyright © 2020
 Questing Heirs
 Genealogical Society, Inc.

Permission to reprint original items from this publication is granted, provided that the reprint is used for non-commercial, educational purposes, and that the following notice appears at the end of the article: 'Previously published in Questing Heirs Genealogical Society Newsletter, Vol. 53, No.2, February 2020.' This newsletter is published monthly as a benefit for members of Questing Heirs; it is not meant to be sold.

In order to receive the monthly newsletter, one must be enrolled as a member of the Society. To join, please contact Membership Chair Cynthia Day-Elliott
 at (562)427-9663